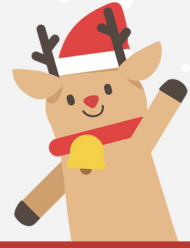


2024 PAGK ANNUAL MEETING

PAGK



일시 2024년 12월 18일(수)

장소 서울대병원 의생명연구원 1층 우덕윤덕병홀

Pharmacometrics and Quantitative Systems Pharmacology (QSP): Embracing science from *in-silico* to clinical trial

PRE-CONFERENCE WORKSHOP

09:30 ~ 12:00

Certara Korea, (주)티앤제이테크

Model-Informed Drug Development (MIDD) 솔루션을 통한 신약개발 가속화

*사전워크숍은 무료로 진행됩니다

Pre-Conference Workshop 사전등록 QR코드 ▶



ANNUAL MEETING

Session 1 : AI Drug Discovery

13:00 ~ 13:25

Federated ADMET Model

김화중

한국제약바이오협회 K-MELLODDY 사업단장

13:25 ~ 13:50

Applied Gen AI to drug development

김희영

Certara APAC SC team 총괄이사

Session 2 : Application of Quantitative Systems Pharmacology (QSP) - Pharmacometrics (PM)

14:00 ~ 14:25

Model informed weight-tiered fixed dosing
in clinical development

이소영

충남대학교 약학대학

14:25 ~ 14:50

Modeling Application for non-clinical and clinical stage
(Biosimilar and New drug)

이현아

삼성바이오에피스

14:50 ~ 15:15

Physiologically based pharmacokinetic/pharmacodynamic
model to predict the effects of formulation and food on the
pharmacokinetics and pharmacodynamics of esomeprazole

김현철

서울대학교 의과대학

15:15 ~ 15:40

Integrated Microphysiological System and PBPK Modeling
for Prediction of Human Diclofenac Pharmacokinetics

최수인

가톨릭대학교 의과대학

15:40 ~ 16:05

Mathematical modeling of Bacteriophage Therapy

채동우

연세대학교 의과대학

Session 3 : Regulation and QSP-PM

16:15 ~ 16:40

Beyond FDA Guidance: Enhancing Accuracy
in Predicting Drug-Drug Interactions

송윤민

KAIST 수리과학과

16:40 ~ 17:05

Introduction of GATERS (Global Alliance Through Excellence
in Regulatory Science) Program - Advancing Regulatory
Science for Evaluation of Effectiveness and Safety of Drugs
through Global SPHERE (Global Science-based PHarmacometric
Extrapolation with Real-world data for Racial and Ethnic groups)

정은경

경희대학교 약학대학

17:05 ~ 17:30

Beyond the label: Dose Optimization Approaches
in Specific Populations

Manjunath P. Pai

University of Michigan

Annual meeting 참가신청 방법

- 온라인 사전등록 : <http://pagk.kr/> *하단QR참조
- 등록비 결제방법 : 온라인 사전등록 후 계좌이체 또는 학회 당일 카드결제
- 학회 등록비 : 교수/연구원 100,000원 대학원생/학부생 50,000원

